

GENERAL SPECIFICATION - VESSEL

ITEM NO.: TK-428 SERVICE: CIP CAUSTIC TANK
 CODE: ASME SECTION VIII STAMP: NO WELDING: ASME
 RADIOGRAPH: NO STRESS RELIEVING: NO
 DESIGN PRESSURE-PSIG (kPa): ATMOS. & LIQUID FILL TEMP.-°F (°C): 200 (93)
 EST. WT. EMPTY-# (kg): BY FAB. FULL WATER: BY FAB. OPERATING: BY FAB.
 WIND VEL.-MPH (km/HR): (SEE NOTE #4) EARTHQUAKE ZONE: BY OWNER

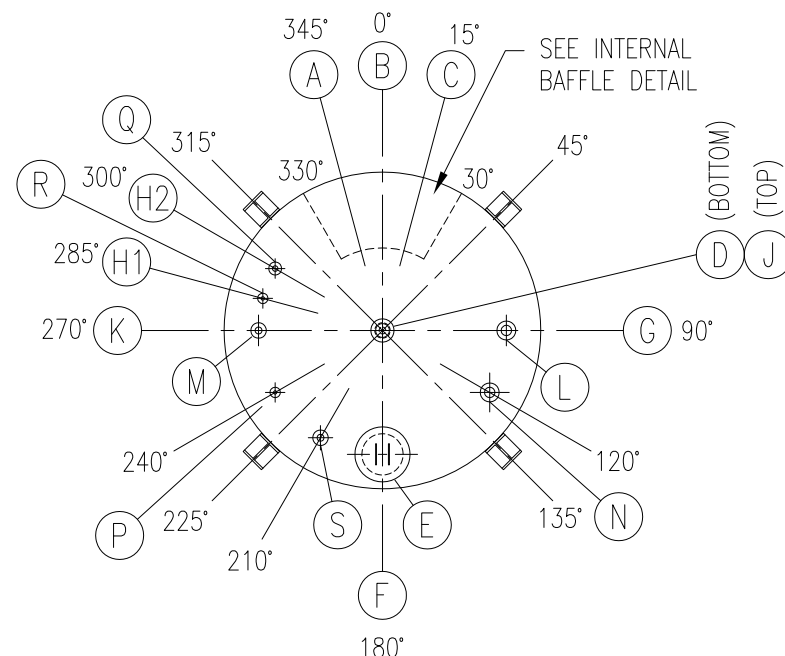
PROCESS DATA
 FLUID: CAUSTIC SOLUTION DESIGN DENSITY-LB/FT³ (kg/m³): 65.23 (1,045)
 OPERATING PRESS.-PSIG (kPa): ATMOSPHERIC TEMP.-°F (°C): 180 (82)
 HOLD-UP TIME: - APPROX. CAPACITY-GAL (L): 42,600 (161,250)
 INLET RATE-GPM (m³/HR): FLASH: NONE
 NON-CONDENSIBLES: -

MATERIAL & THICKNESS-IN (mm)
 SHELL: A516 GR.70 CARBON STEEL (SEE NOTE #2)
 TOP HEAD: A516 GR.70 CARBON STEEL (SEE NOTE #2)
 BOT. HEAD: A516 GR.70 CARBON STEEL (SEE NOTE #2)
 SUPPORTS: (4) CARBON STEEL LEGS
 BOLTS: A193 B7 W/A194 2H HEX NUTS GASKETS: 1/16" (2mm) NON-ASBESTOS
 NOZZLES: IN (mm)
 NECK: A106 GR. B CARBON STEEL PIPE
 FLANGE: A105 FORGED STEEL 150# SLIP-ON
 COUPLING: A105 FORGED STEEL 3000# THREADED FULL
 CORROSION ALLOWANCE: 3/16" (5mm) (SEE NOTE #2)

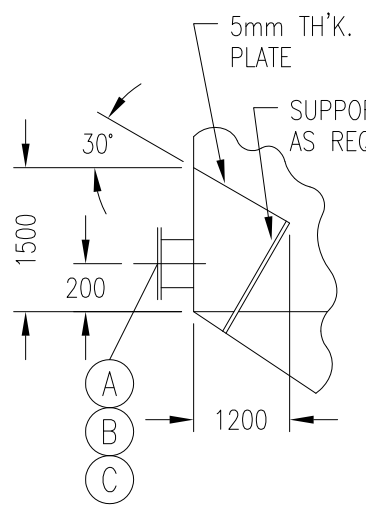
MARK	SERVICE	SIZE	NOTE
A	OUTLET TO P-433	10"	FLANGED
B	OUTLET TO P-730	8"	FLANGED
C	OUTLET TO P-456	10"	FLANGED
D	OUTLET TO P-445	4"	FLANGED
E	MANWAY	24"	FLANGED W/HINGED COVER
F	MANWAY	24"	FLANGED W/HINGED COVER AND DAVIT
G	LEVEL CONN.	3"	FLANGED
H1,H2	TEMP. CONN.	1"	COUPLING - (2) REQ'D.
J	VENT	8"	FLANGED
K	OVERFLOW	14"	FLANGED
L	CIP HEADER INLET	6"	FLANGED W/INTERNAL DIP TUBE
M	EVAP CIP INLET	4"	FLANGED W/INTERNAL DIP TUBE
N	CIP HEATER INLET	6"	FLANGED W/INTERNAL DIP TUBE
P	CIP PURGE INLET	2"	FLANGED W/INTERNAL DIP TUBE
Q	SUMP INLET	3"	FLANGED
R	CAUSTIC CIRC INLET	2"	FLANGED
S	CONDENSATE INLET	4"	FLANGED

PAINT: ALL EXTERNAL CARBON STEEL SURFACES TO BE CLEANED AND OTHERWISE PROPERLY PREPARED PRIOR TO APPLICATION OF ONE COAT OF CORROSION PROTECTION PRIMER PER SHOP STANDARD. FINAL PAINTING PER OWNER'S REQUIREMENTS.

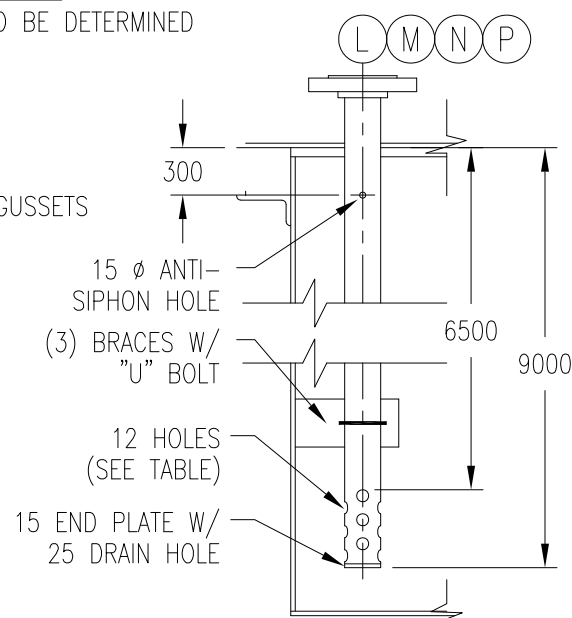
NOTES: 1. FINAL LOCATION AND SIZING OF SUPPORT RINGS BY FABRICATOR.
 2. CORROSION ALLOWANCE TO BE MADE IN ADDITION TO ALL CALCULATED THICKNESSES.
 3. FABRICATOR TO PROVIDE LADDERS, PLATFORMS, AND PIPE SUPPORT PADS.
 4. 160 Km/h PER URUGUAYAN NORMATIVES: UNIT 50-84.



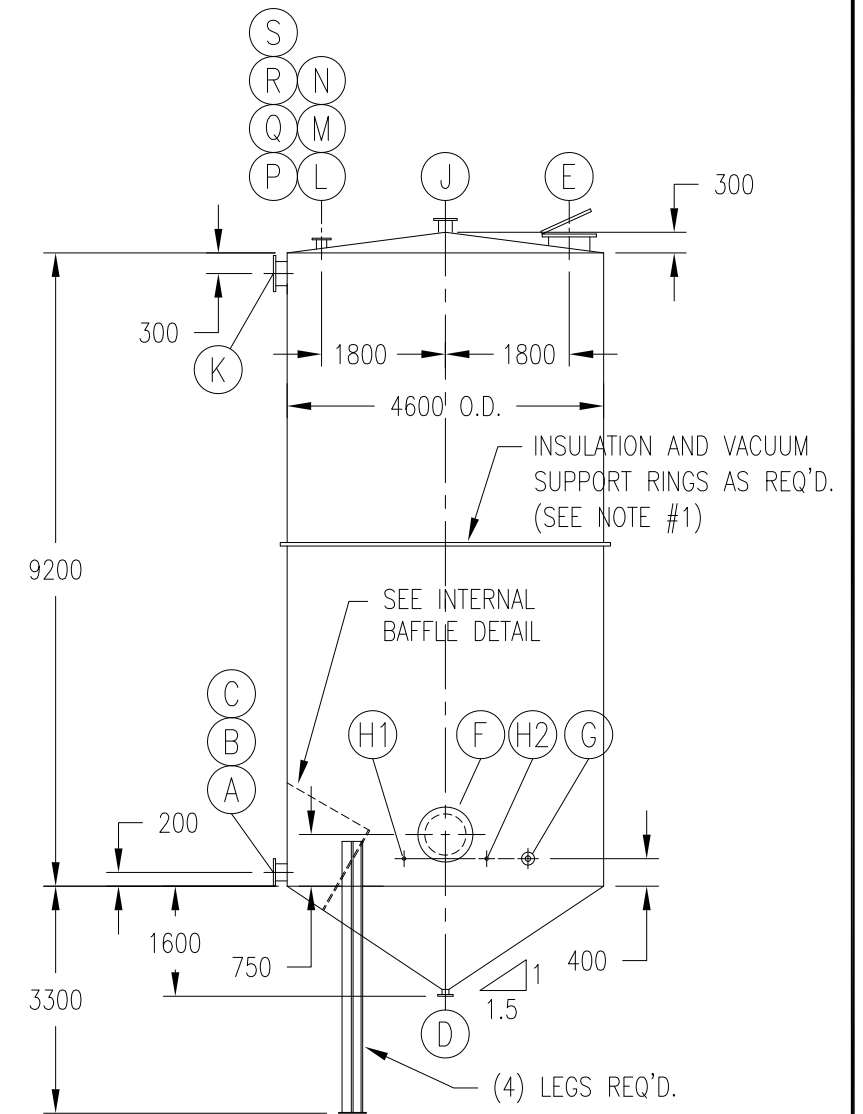
ORIENTATION
 FINAL ORIENTATION TO BE DETERMINED



INTERNAL BAFFLE DETAIL



NOZZLES (L M N P) DETAIL



ELEVATION

NOZ	DIP TUBE	SIDE HOLE Ø
L	6"	50
M	4"	25
N	6"	50
P	2"	15

NOZZLE SIZE	NOZZLE ** EXTENSION
1 1/4"-6"	150
8"-24"	200

** - UNLESS OTHERWISE SPECIFIED

1. NOTICE: The process design and other information contained on this drawing is the confidential property of KATZEN INTERNATIONAL, INC. and is protected by confidentiality agreement, copyright law, and trade secret law, and may not be used, reproduced, discussed with, or disclosed to, any unauthorized persons or organizations in any manner or for any purpose, without prior written approval by an authorized representative of KATZEN INTERNATIONAL, INC.
 2. KATZEN INTERNATIONAL, INC. is authorized to practice engineering in the state of Ohio, USA. All code requirements shall be reviewed by a person or persons licensed to practice engineering in the applicable jurisdiction, unless stipulated otherwise.

								BIOETANOL PAYSANDÚ	
						UTE ABENER TEYMA PAYSANDÚ		KATZEN INTERNATIONAL, INC. TECHNOLOGY • ENGINEERING CINCINNATI, OHIO, U.S.A.	
						Scale: NONE		211,200 LITERS/DAY MOTOR FUEL GRADE ETHANOL PLANT EQUIPMENT SPECIFICATION	
						Rev. 0 3/1/13		REV. 0 ISSUE	
						WLB BG BG		N° Plano: 0003-PLN-KAT-04-62-0204 Sheets: 1 Sheet N°: 1	
						Origin: BG		Client N°: 1132-01 Dwg N°: 04-204	
						ITEM: TK-428		CIP CAUSTIC TANK	