

GENERAL SPECIFICATION – VESSEL

ITEM NO.: TK-803 SERVICE: RECYCLE PRODUCT TANK
 CODE: API 650 STAMP: NO WELDING: ASME
 RADIOGRAPH: NO STRESS RELIEVING: NO
 DESIGN PRESSURE-PSIG (kPa): (SEE NOTE #5) TEMP.-°F (°C): 122 (50)
 EST. WT. EMPTY-LB (kg): BY FAB. FULL WATER: BY FAB. OPERATING: BY FAB.
 WIND VEL.-MPH (km/HR): (SEE NOTE #4) EARTHQUAKE ZONE: BY OWNER

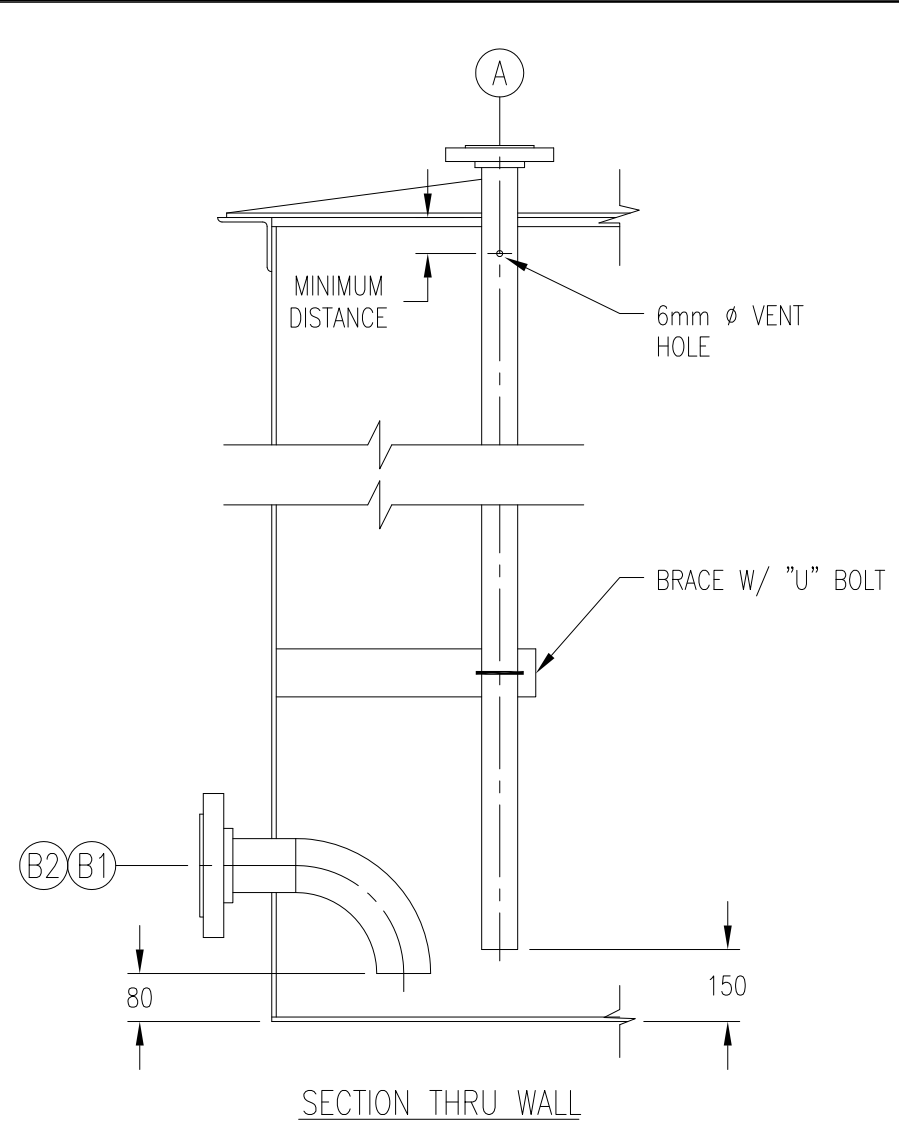
PROCESS DATA
 FLUID: ETHANOL DESIGN DENSITY-LB/FT³ (kg/m³): 48.7 (780)
 OPERATING PRESS.-PSIG (kPa): ATMOSPHERIC TEMP.-°F (°C): 100 (38)
 HOLD-UP TIME: - APPROX. CAPACITY-GAL (L): 20,000 (76,000)
 INLET RATE-GPM (m³/HR):- FLASH: NONE
 NON-CONDENSIBLES: -

MATERIAL & THICKNESS-IN (mm)
 SHELL: A285 GR.C CARBON STEEL
 TOP HEAD: A285 GR.C CARBON STEEL
 BOT. HEAD: A285 GR.C CARBON STEEL
 SUPPORTS: NONE
 BOLTS: A193 B7 W/ A194 2H HEX NUTS GASKETS: 2mm NON-ASBESTOS
 NOZZLES: IN (mm)
 NECK: A106 GR. B CARBON STEEL PIPE
 FLANGE: A105 FORGED STEEL 150# SLIP-ON
 COUPLING: A105 FORGED STEEL 3000# THREADED FULL
 CORROSION ALLOWANCE: 2mm

MARK	SERVICE	IN (mm)	NOTE
A	INLET	3"	FLANGED W/ INTERNAL DIP PIPE
B1,B2	OUTLET	4"	FLANGED W/ INTERNAL 90° ELBOW - (2) REQ'D
C	LEVEL GAGING	6"	FLANGED VAREC SERIES 42-MODEL 42-6-112
D	MANWAY	24"	FLANGED W/ BLIND COVER & DAVIT
E	DRAIN	1"	COUPLING
F1,F2	LEVEL CONN.	3"	FLANGED - (2) REQ'D
G	BREATHING VENT	6"	FLANGED
H	EMERGENCY VENT	8"	FLANGED
J	MANWAY	20"	FLANGED W/ HINGED COVER
K	INLET	4"	FLANGED

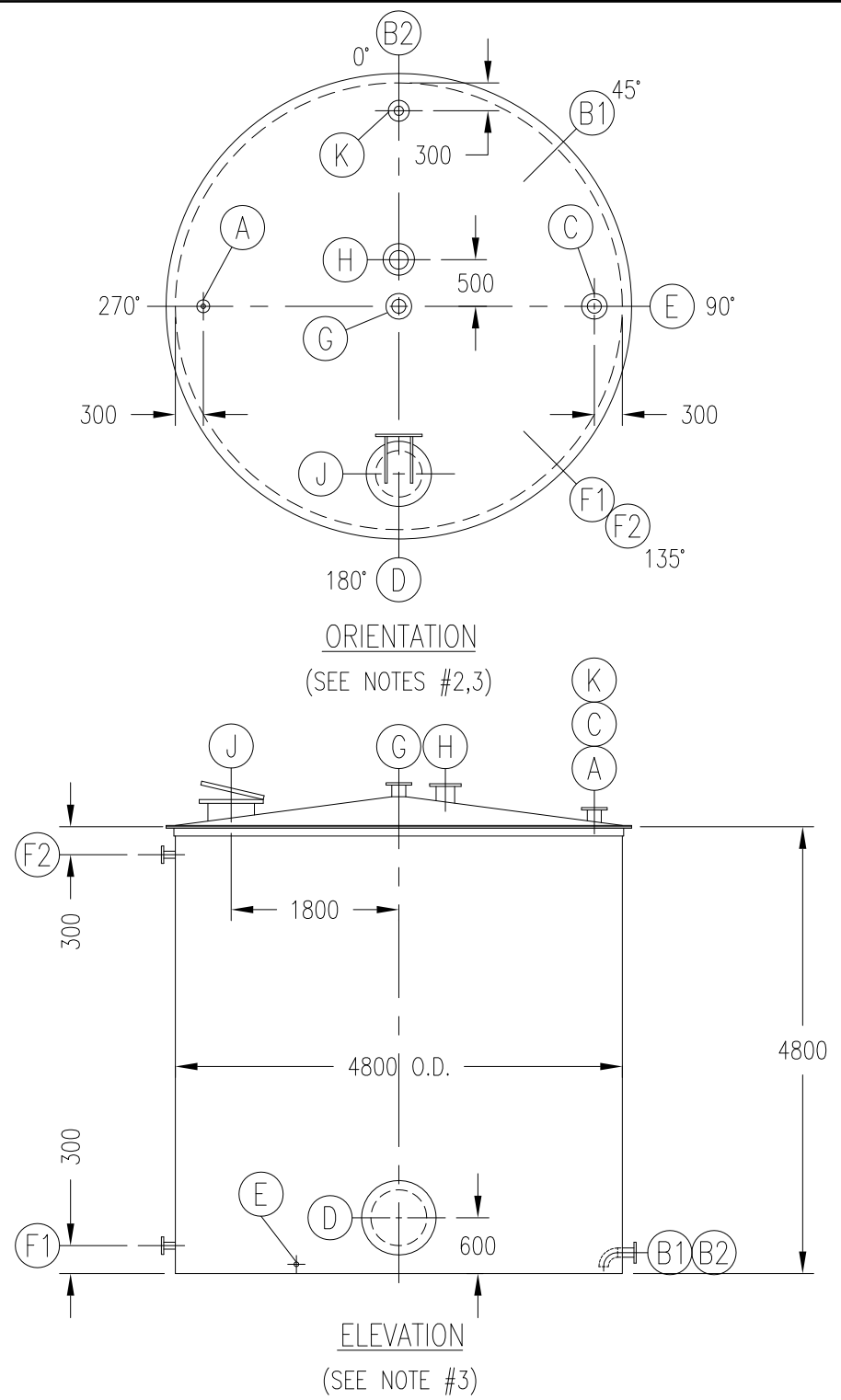
MISCELLANEOUS
 LADDER:
 PAINT: ALL EXTERNAL CARBON STEEL SURFACES TO BE CLEANED AND OTHERWISE PROPERLY PREPARED PRIOR TO APPLICATION OF ONE COAT OF CORROSION PROTECTION PRIMER PER SHOP STANDARD. FINAL PAINTING PER OWNER'S REQUIREMENTS.

NOTES:
 1. ROOF AND FLOOR PLATES TO BE BUTT WELDED.
 2. FINAL ORIENTATION TO BE DETERMINED UPON FINAL PIPING DESIGN.
 3. ALL DIMENSIONS ARE SHOWN IN MILLIMETERS UNLESS OTHERWISE NOTED.
 4. 160 Km/h PER URUGUAYAN NORMATIVES: UNIT 50-84.
 5. DESIGN PRESSURE: 1 PSIG (7 kPa) PLUS FULL STATIC HEAD OF LIQUID (S.G.=1.0)
 DESIGN VACUUM: -0.5 PSIG (-3.5 kPa) WHEN TANK IS EMPTY.




NOZZLE SIZE	NOZZLE ** EXTENSION
1 1/4"-6"	150
8"-24"	200

** - UNLESS OTHERWISE SPECIFIED



1. NOTICE: The process design and other information contained on this drawing is the confidential property of KATZEN INTERNATIONAL, INC. and is protected by confidentiality agreement, copyright law, and trade secret law, and may not be used, reproduced, discussed with, or disclosed to, any unauthorized persons or organizations in any manner or for any purpose, without prior written approval by an authorized representative of KATZEN INTERNATIONAL, INC.
 2. KATZEN INTERNATIONAL, INC. is authorized to practice engineering in the state of Ohio, USA. All code requirements shall be reviewed by a person or persons licensed to practice engineering in the applicable jurisdiction, unless stipulated otherwise.

						 BIOETANOL PAYSANDÚ	
						UTE ABENER TEYMA PAYSANDÚ	
						KATZEN INTERNATIONAL, INC. TECHNOLOGY • ENGINEERING CINCINNATI, OHIO, U.S.A.	
						Scale: NONE 211,200 LITERS/DAY MOTOR FUEL GRADE ETHANOL PLANT EQUIPMENT SPECIFICATION	
						Nº Plano: 0003-PLN-KAT-08-62-0202 Sheets: 1 Sheet Nº: 1	
						Client Nº: 1132-01 Dwg Nº: 08-202	
0	3/1/13	REV. 0 ISSUE	WLB	JDC	JDC	ITEM: TK-803 RECYCLE PRODUCT TANK	
Rev.	Date	Description	Dwn By	Ckd By	Appd By	Origin: JDC	